



Ōtāhuhu College Newsletter

Friday 25th July 2025

Important Notices

Friday 25 th July	School Production
Monday 4 th – Friday 8 th August	Cook Island Language Week
Monday 11 th – Friday 15 th August	Maths Week



From Our Principal

The production has showcased the skills and dedication of our students and has been well received by the packed audiences. Next stop is their tour of the East Coast.

The qualification system has been in the news this week, and there is likely to be changes in the future. These changes will emphasize the importance of external examinations. The advances of AI, if nothing else, means that external exams become more important to ensure that students are learning effectively and well prepared for the next steps in their studies and career when they leave Otahuhu College. We will be working hard to further improve so that we are well prepared for these challenges.

This week our school attendance has once again been above the national average. Thank you for your support in getting your child to school on time every day.

Our Commitments

Each week our students receive an engagement grade based on a 1 to 5 scale. To get a 5, students need to attempt all classwork and homework and consistently strive to produce work at or above the level expected from this pupil as indicated by past academic results. You can help by encouraging your child to do homework work, and independent study. Encourage your child to always participate in class discussions, by volunteering to ask and answer questions.

BOT Elections

The School Triennial elections will be taking place this term. Our Election Day is Wednesday 10th September. If you or someone you may know is interested in being apart of our Board of Trustees, please email enquiries@otahuhucollege.school.nz. We have 5 available spots and nominations close midday on Wednesday 6th August.

Attendance

The financial consequences of chronic absenteeism are alarming. By age 25, individuals who were chronically absent in school earn \$40,000 less per year than their peers who regularly attended. This significant gap underscores the critical importance of keeping students in school.

At Otahuhu College, early intervention is key. Students missing 10-15 days in a term are referred to Attendance Services, and those absent for 15 or more days are reported to Oranga Tamariki. These steps

are part of a broader effort to tackle absenteeism and set students up for success in life.
Ko e fānauako 'oku 'ikai ke nau ma'u akó, 'e 'ikai te nau ma'u 'a e pa'anga 'e \$40,000 'i he ta'u.

O tamaiti e le to'a'aga i le a'oga e maua se tupe itiiti e \$40,000 i le tausaga pe'a fua atu i tamaiti e 'auai i le a'oga i aso uma. E taua le alu i le aoga.

Uniforms

A polite reminder of the expectations for dress and uniform. It is becoming a regular occurrence that students are in non-uniform jumpers, jackets, hats and shoes. Whilst winter is with us, there are items of school uniform available for the season. Please see uniform expectations below and how you can access items for purchase.

Uniforms can be purchased from **NZ Uniforms** 4/531 Great South Road, Penrose, Auckland 1061. You can also visit their website at NZuniforms.com.

Getting to University

TE ITI KŌPARA Our kura has been invited to participate in a mentor programme with AUT providing guidance and opportunities to 'taste' University. Ten, Year 11 students have been nominated to attend this 3-year course that gives them experience of looking at career options and 'varsity-life'. The hopes are that these students will have a better understanding of expectations at university with a guided pathway to making university a real opportunity.

Last week, we visited AUT City Campus, experiencing pathways into Engineering, Construction, Radio Technologies, Digital Media, Textiles, Conservation and Human Sciences. This week, we travel to AUT North Campus to explore and experience Sports and Recreation.





Sports News

Winter Sports Photos – Friday 22nd August in the School Gym

Pāparakuihi

This week we kicked off Pāparakuihi (Breakfast club). Hot milo, cereals and toast. Fridays we will have hot Baked Beans as well. Engaging positive learning is supported with a full puku. We run Tuesday, Wednesday and Friday mornings from 7.30 am to 8.30 am. We have an awesome space to chill out and start our day.

On behalf of the taura and staff supporting this kaupapa, I would like to thank all those who have provided kōha and kai to help us deliver an awesome initiative for ngā taura o Ōtāhuhu.



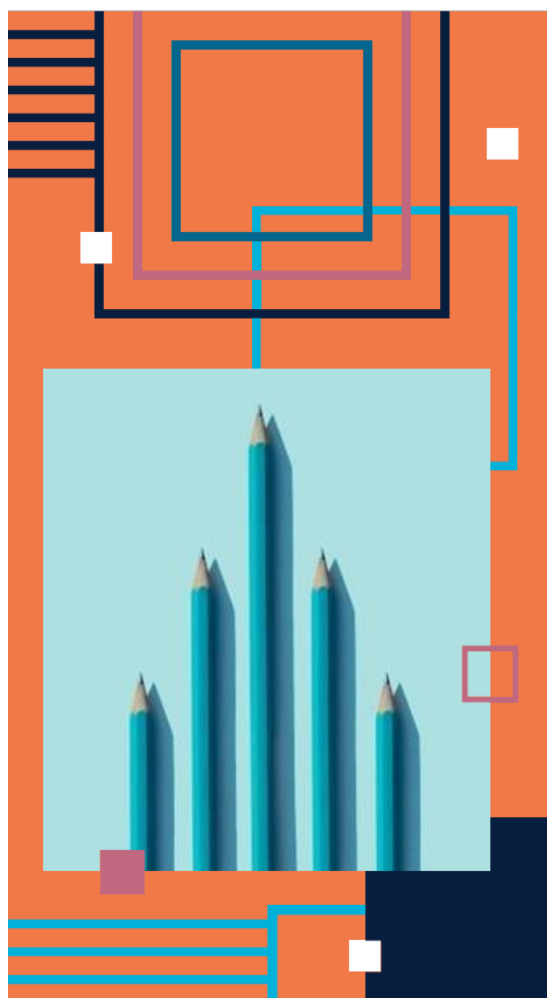
Study News

Careers Focus Week – Year 11

This week, our Year 11 cohort will continue their careers-focused learning in collaboration with Ms. Sudhakar from our Careers Department. Attendance is especially important, as all students will meet with Ms. Sudhakar to explore the online careers platform. This tool supports research into potential career pathways, required qualifications, and the subjects' students should consider studying in Year 12 to help achieve their goals.

We encourage you to continue discussing your child's future with them at home. These meaningful conversations play a vital role in helping students reflect on their aspirations and make informed decisions.

Students can access both the school portal and the careers website from home using any device. This allows whānau to stay up to date with academic progress, attendance, and careers research, and to support their child's journey.



ŌTĀHUHU COLLEGE



YEAR 11 2025

PASS CRITERIA

- Achieve Level 1 Literacy
(5 Reading & 5 Writing credits via CAA or alternate credits)
- Achieve Level 1 Numeracy
(10 credits)
- Maintain 80% attendance
- Earn an Engagement grade of 3 or above
- Participate in at least one extra-curricular activity

A STUDENT WHO DOES NOT ACHIEVE THE ABOVE WILL BE CONSIDERED FOR A RE-SIT OF THEIR YEAR 11 PROGRAMME TO BE ABLE TO MEET THE EXPECTATIONS OF STUDIES IN YEAR 12.

2025

ŌTĀHUHU
COLLEGE

Y11 CAA support sessions

Check out where you can get support, when you can get support and
your role in gaining Level 1 Literacy

**Please, help me gain my
Level 1 Literacy?!**

Grab your CAA Practice booklet from your whānau teacher!

**EVERY
THURSDAY
FROM
WEEK 4**

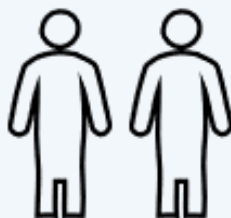
**CLASSROOMS
M2 AND
M3**

**BRING YOUR
PRACTICE
BOOKLET
FOR
SUPPORT**

**Whether you complete the activities in the booklet at home, or
with support in our help centre, you can get your efforts marked
with feedback for the up and coming assessments.**



**Pass complete tasks
to your English
teacher for marking
and guidance**



**Still confused? Concerned?
Need more support?
Speak to Ms Norgate (Deans) or
Ms Christensen (T1) for further
guidance.**

HELP CENTRE AND HOMEWORK CLUB



ENGLISH

HOMEWORK HELP

**ASSESSMENT
SUPPORT**

**LITERACY SKILLS
PRACTICE**

CAA PREP

This is a study space where you can get extra help, more practice, and additional time to work on skills, homework, and assessments.

This is an opportunity for students of all year levels to get extra guidance and support to help them achieve to the best of their ability.

DETAILS:

Day: Every Thursday

Time: 3pm-4pm

Location: OC Library



Thank you to our sponsors

Apollo
PROJECTS

